

WATERPROOFING SYSTEMS[®]

ADVANCED TECHNOLOGY
SOLUTIONS FOR
TOTAL PROTECTION
AGAINST WATER



DIASEN[®]
GREEN BUILDING FUTURE



**A GOOD WATERPROOFING
MEANS QUALITY AND
DURABILITY FOR BUILDINGS**



INDEX

- 2** Water and its barriers
- 4** The four waterproofing technologies
- 6** Smart drying technology
- 8** Acriflex Rapido
- 10** Ultragum
- 12** Ultrabit
- 14** High performance
- 16** Acriflex Pro
- 18** Acriflex X-Pro
- 20** Oriplast Reflex
- 22** Technical waterproofing
- 24** WATstop
- 26** Acriflex pH4
- 28** Acriflex Fybro
- 30** Classic line
- 32** Acriflex Mono
- 34** O.R.A Eco Anti-rain
- 36** Primers
- 38** Vapostop
- 40** Grip Primer
- 42** SBS-Bond
- 44** Acriflex Primer
- 46** System accessories
- 48** Deaseal Strong
- 50** Polites Tnt
- 52** Safety Joint Roll
- 54** Safety Joint Top
- 56** Interventions and solutions

WATER AND ITS BARRIERS

Water is life but also a threat.

This duality of nature applies not only to people, but to buildings too. In construction, water performs an essential function as it is needed for mixing the clay that is fired to produce bricks, and for mixing aggregates and cement together to make concrete.

Yet while on the one hand it plays a key role in the very birth of buildings, water is also involved in their ageing process because it affects their structural quality and lifespan. That is why **it is vitally important to keep water, in all its forms, away from the building**: both precipitation from above, and rising damp from below.





WATERPROOFING A BUILDING, PROTECTING IT FROM THE RAVAGES OF WATER, MEANS CARRYING OUT **EFFECTIVE PREVENTIVE MAINTENANCE TO SAFEGUARD ITS STRUCTURAL INTEGRITY AND ENHANCE** ITS LEVELS OF HABITABILITY AND LIVEABILITY.



THE FOUR WATERPROOFING TECHNOLOGIES

Diasen technologies are always ahead of the curve with regard to the ever-evolving world of waterproofing, which now favours increasingly functional solutions that overcome the application and performance limitations associated with traditional products.



In line with this thinking, and in a bid to offer an innovative, articulated response to market demands, Diasen has identified four macro areas of technology corresponding to four product lines.

- **SMART DRYING TECHNOLOGY**
- **HIGH PERFORMANCE**
- **TECHNICAL WATERPROOFING**
- **CLASSIC LINE**





SMART DRYING TECHNOLOGY

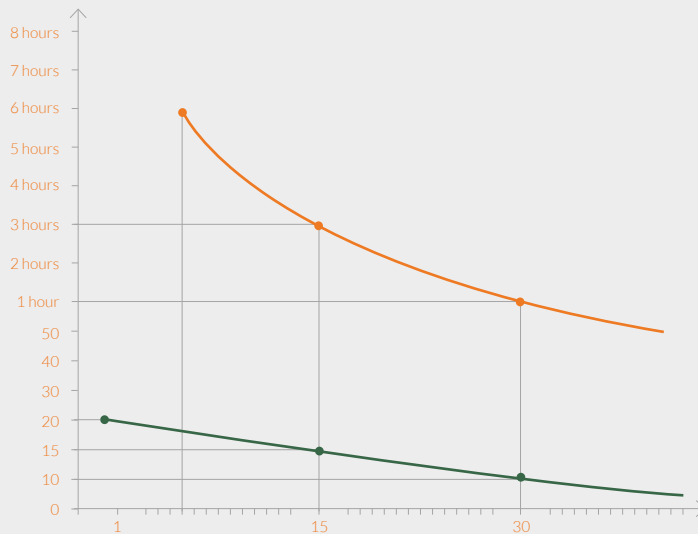
This is an innovative line of one-component waterproofing products designed for application all year round. They are ideal in extreme environmental conditions where traditional products cannot be used. What makes these products unique is the innovative filming system that produces special properties, thanks to the use of nano waterproofing technology.

Unlike traditional liquid waterproofing, **Smart Drying Technology products** actually produce uniform filming through the whole thickness of the applied product. This enables smart drying any time of year and a film that does not bleach, wrinkle or wash out.

THE PRODUCTS IN THIS LINE ENSURE QUICK FILMING – AROUND 20 MINUTES THANKS TO THE INTERACTION BETWEEN ADDITIVES AND RESINS – **AND CAN BE APPLIED EVEN IN CRITICAL ATMOSPHERIC CONDITIONS, I.E. AT TEMPERATURES AS LOW AS 1°C AND WITH RELATIVE HUMIDITY OF 98%.**

THE SMART DRYING TECHNOLOGY LINE INCLUDES:

- **ACRIFLEX RAPIDO**
- **ULTRAGUM**
- **ULTRABIT**



FILMING TIME OF A TRADITIONAL PRODUCT COMPARED WITH A SMART DRYING TECHNOLOGY PRODUCT

- Smart Drying Technology
- Traditional Product

ACRIFLEX RAPIDO

It is a one-component, water-based coloured product with high resistance to water absorption, also in conditions of stagnation, and elastic properties that ensure excellent crack bridging performance. The product has zero emission of volatile organic compounds.

The waterproofing abilities of Acriflex Rapido have been acknowledged by **EOTA** (European Organization for Technical Assessment) with the issuing of the ETA (European Technical Assessment) which certifies its waterproofing performance for at least 10 years with a minimum coverage of 2 Kg/m².



FIELDS OF USE

- Flat or pitched roofs
- Smooth and slated bituminous membranes
- Terraces and balconies

TECHNICAL DATA

Colours: ● ○

Coverage: 1,00 kg/m² in two coats as asbestos encapsulation
2,00 kg/m² in two coats as waterproofing

Application:



PERFORMANCE



**WASHOUT
RESISTANCE**

20 min



**BREAK
ELONGATION**

160 %



**CONCRETE
ADHESION**

0.536 N/mm²



**RESISTANCE TO
ACCELERATED
WEATHERING CYCLES**

1680 HOURS (10 YEARS)



**LOAD
RESISTANCE**

1.4 MPa

ULTRAGUM

It is a one-component, water-based bituminous waterproofing product which is ready for use. It offers excellent elasticity, resistance to UV rays, weathering and water absorption, also in conditions of stagnation.

Ultragum is suitable for renovation of traditional bituminous membranes, offering low-thickness waterproofing, a washout resistance time of around 30 minutes, with full drying after approximately 4 hours. Furthermore, Ultragum owns the **ETA** (European Technical Assessment) certification which certifies its waterproofing performance for at least 10 years with a minimum coverage of 2,00 kg/m².



FIELDS OF USE

- Smooth and slated bituminous membranes
- Flat and pitched concrete roofs
- Foundation walls

TECHNICAL DATA

Colours:  

Coverage: 2 kg/m² with two coats

Application:



PERFORMANCE



**WASHOUT
RESISTANCE**
(UP TO +5 °C AND
WITH 98% R.H)

30 min



**BREAK
ELONGATION**

336 %



**TENSILE
STRENGTH**

1.0 MPa

ULTRABIT

It is a one-component, water-based bituminous product, enriched with polystyrene microspheres and intended for one-coat application with a thickness of up to 3 mm. The product comes as a rapid-drying paste which can be used to waterproof and level out irregular supports, both horizontal and vertical, thanks to its thixotropic properties.

Ultrabit, which is flexible at low temperatures down to -25°C , can be applied all year round at temperatures as low as 5°C , without the use of any reinforcement mesh, creating a continuous layer without joints. At a temperature of 23°C and with relative humidity of 50% the product dries in around 4 hours and has a film-forming time of 30 minutes.



FIELDS OF USE

- Terraces and balconies
- Flower boxes
- Foundation walls
- Irregular flat or pitched concrete supports

TECHNICAL DATA

Colours: ●

Coverage: 2 L/m²

Application:



PERFORMANCE



**WASHOUT
RESISTANCE**
(UP TO +5 °C AND
WITH 98% R.H)

30 min



**BREAK
ELONGATION**

91.40 %



**TENSILE
STRENGTH**

0.42 MPa

HIGH PERFORMANCE

This is the line of one-component, water-based products with nano waterproofing technology and next-generation elastomeric resins.

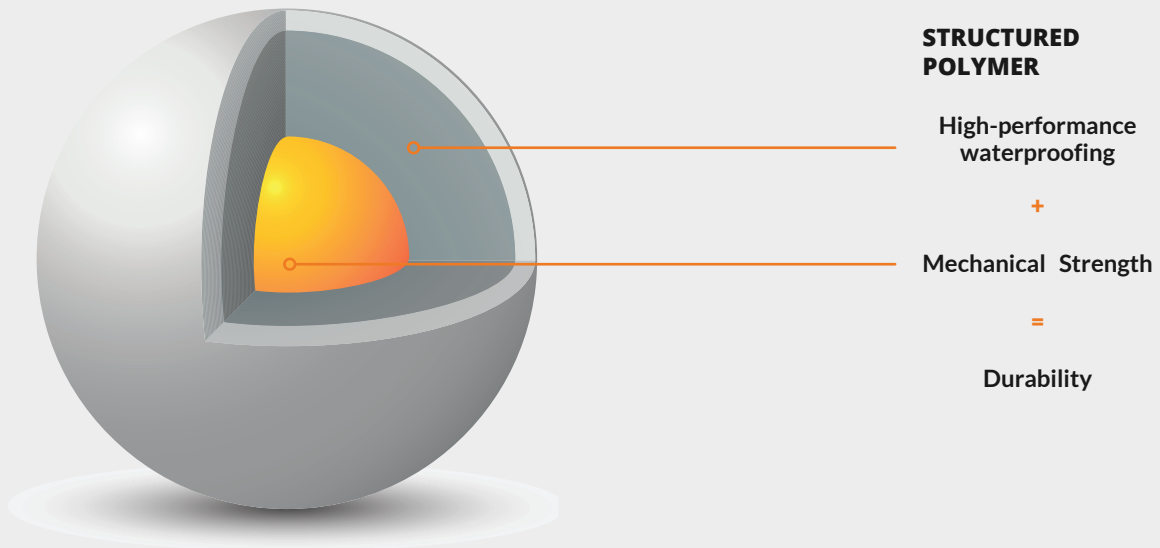
High Performance products ensure excellent performance in terms of resistance to water stagnation, durability and mechanical strength up to -25°C.



THE STANDOUT CHARACTERISTIC OF THIS LINE IS THE INNOVATIVE CHOICE OF A RESIN CONTAINING A POLYMER WITH A PARTICULAR MOLECULAR STRUCTURE (CORE-SHELL): AN EXTERNAL SHELL WHICH GIVES THE POLYMER STRENGTH, PLUS AN INNER CORE WITH THE PERFORMANCE CHARACTERISTICS OF THE RESIN. **THE CORE-SHELL STRUCTURE ENSURES LONGER DURATION WITHOUT ANY DETERIORATION IN PERFORMANCE.**

THE **HIGH PERFORMANCE** LINE INCLUDES:

- **ACRIFLEX PRO**
- **ACRIFLEX X-PRO**
- **ORIPLAST REFLEX**



ACRIFLEX PRO

It is a one-component, water-based acrylic waterproofing product for quick and easy application which offers certified durability of at least ten years with a temperature range of -20°C and 90°C. It is resistant to UV rays and the elements. The product has zero emission of volatile organic compounds.

The product can be used for waterproofing with low thicknesses and can be left exposed, creating a seamless layer that adapts to supports with complex geometries. It is suitable for asbestos encapsulation, given its excellent ability to consolidate and fix asbestos fibres.

Furthermore, Acriflex Pro owns the **ETA** (European Technical Assessment) certification which certifies its waterproofing performance for at least 10 years with a minimum coverage of 2,00 kg/m².



FIELDS OF USE

- Flat or pitched roofs
- Terraces and balconies
- Asbestos encapsulation

TECHNICAL DATA

Colours:   

Coverage: 1,00 kg/m² in two coats as asbestos encapsulation
2,00 kg/m² in two coats as waterproofing

Application:



PERFORMANCE



COLD FLEXIBILITY

-25 °C



BREAK ELONGATION

200%



CONCRETE ADHESION

0.5 N/mm²



RESISTANCE TO ACCELERATED WEATHERING CYCLES

1680 HOURS (10 YEARS)



TENSILE RESISTANCE

1.5 MPa

ACRIFLEX X-PRO

It is a one-component, water-based acrylic waterproofing product which is directly walkable thanks to high elastic modulus fibres, and is suitable for application without the use of reinforcement mesh. It is characterised by a special formula that gives the product excellent resistance to water stagnation and high elastic modulus.

Acriflex X-Pro is walkable and can be left exposed. Waterproofing can be achieved with low thicknesses and the seamless surface can be tiled over directly. It is resistant to crack bridging and water stagnation.

The product has zero emission of volatile organic compounds.



FIELDS OF USE

- Flat or pitched roofs
- Tiled surfaces
- Terraces and balconies

TECHNICAL DATA

Colours:   

Coverage: 2 kg/m² with two coats

Application:



PERFORMANCE



COLD FLEXIBILITY

-25 °C



BREAK ELONGATION

90%



CONCRETE ADHESION

0.5 N/mm²



RESISTANCE TO ACCELERATED WEATHERING CYCLES

1680 HOURS (10 YEARS)



TENSILE RESISTANCE

4 MPa

ORIPLAST REFLEX

It is a one-component, water-based, ultra-reflective product that combines waterproofing with reflection of UV rays, lowering the temperature of the support and, thus, energy consumption related to air conditioning.


Thanks to its versatility of use, Oriplast Reflex is resistant to water stagnation, is flexible at low temperatures and, thanks to special aggregates in the formula, it can also be used as an ultra-reflective coating.



FIELDS OF USE

- Flat or pitched roofs
- Smooth and slated bituminous membranes
- Supports for photovoltaic systems

TECHNICAL DATA

Colours: 

Coverage:

1 kg/m² as ultra-reflective coating

2 kg/m² as ultra-reflective waterproofing

Application:



PERFORMANCE



REFLECTANCE

> 90%



SOLAR REFLECTANCE INDEX (SRI)

102%



COLD FLEXIBILITY

-25 °C



BREAK ELONGATION

327%



RESISTANCE TO ACCELERATED WEATHERING CYCLES

1680 HOURS (10 YEARS)

TECHNICAL WATERPROOFING

This line is dedicated to the waterproofing of surfaces with levels of criticality which call for targeted interventions and technical solutions with the application of products that guarantee specific, highly advanced performance.



THE PRODUCTS OF THE TECHNICAL WATERPROOFING LINE ENABLE WATERPROOFING IN SITUATIONS WITH COMPLEX APPLICATION CHALLENGES: THE PRESENCE OF HIGH HUMIDITY, UNDERGROUND SUPPORTS, CEMENT PAVING, CONTAINMENT TANKS FOR WATER AND ACIDIC OR BASIC LIQUID SUBSTANCES WITH A PH VALUE BETWEEN 2 AND 12 WITHOUT THE NEED FOR ADDITIONAL PROTECTIVE LAYERS.

THE **TECHNICAL WATERPROOFING** LINE INCLUDES:

- **WATSTOP**
- **ACRIFLEX PH4**
- **ACRIFLEX FYBRO**



WATSTOP

It is a three-component epoxy resin formulated to encapsulate rising damp and create a vapour barrier on damp substrates. It is effective for positive and negative pressure waterproofing, as it is resistant up to 9.5 bar of pressure and acts as an osmotic treatment on retaining walls.

In addition to its waterproofing capabilities, which can be obtained even at low temperatures, WATstop has excellent consolidating and filling properties; the product is easy to plaster, paint and tile over, confirming its outstanding versatility and adaptability to applications of countless different types.



FIELDS OF USE

- Rising damp
- Cellars and garages
- Damp retaining walls
- Lift shafts

TECHNICAL DATA

Colours: ○ ●

Coverage:

1 kg/m² as a vapour barrier and osmotic
2 kg/m² as negative-side waterproofing

Application:



PERFORMANCE



**POSITIVE PRESSURE
WATERPROOFING**

9.5 atm



**NEGATIVE PRESSURE
WATERPROOFING**

9.5 atm



**VAPOUR
BARRIER**

$\mu = 13361$



**ADHESION TO CEMENT
SUBSTRATES**

2.5 N/mm²

ACRIFLEX PH4

It is a two-component, fibre-reinforced, water-based product with high chemical resistance; this characteristic makes it suitable for the internal and external waterproofing of containers and tanks used for storage of highly acidic or basic substances, and for the protection of supports in direct contact with highly corrosive substances.

The product can also be used at low temperatures and is resistant to water stagnation and freeze and thaw cycles. In addition, Acriflex pH4 is characterised by high elasticity, allowing waterproofing with low thicknesses, and has high tensile strength.



FIELDS OF USE

- Containment tanks for liquids with acidic or basic pH
- Protection of supports in direct contact with highly corrosive substances

TECHNICAL DATA

Colours: ●

Coverage: 2.5 kg/m² with two coats

Application:



PERFORMANCE



CHEMICAL RESISTANCE

from pH 2 to pH 12



COLD FLEXIBILITY

-20 °C



BREAK ELONGATION

87%



RESISTANCE TO ACCELERATED WEATHERING CYCLES

1680 HOURS (10 YEARS)

ACRIFLEX FYBRO

It is a two-component, water-based waterproofing product reinforced with polypropylene fibres which allow application without the use of reinforcement mesh. Acriflex Fybros waterproofs with low thickness, without overloading the floor, and can be used on different types of supports with different uses.

The product creates a continuous, seamless layer without overlaps and thus minimises the scope for error on the part of the installation technician. Acriflex Fybros is flexible to cold to a temperature of -20° and is resistant to UV rays and the elements.

The product has zero emission of volatile organic compounds.



FIELDS OF USE

- Flat or pitched roofs
- Terraces and balconies

TECHNICAL DATA

Colours: ●

Coverage: 2 kg/m² with two coats

Application:



PERFORMANCE



**BREAK
ELONGATION**

149.33%



**DRYING
TIME**

4 h 23 °C at 50% R.H.



**COLD
FLEXIBILITY**

-20 °C



**RESISTANCE TO
ACCELERATED
WEATHERING CYCLES**

1680 HOURS (10 YEARS)

CLASSIC LINE

This is the line of water-based waterproofing products which are easy to apply, flexible, elastic and ideally suited to those situations that do not require waterproofing performance in severe weather conditions, with rapid drying times or particular project requirements.



THE CLASSIC LINE IS CHARACTERISED BY WATERPROOFING PRODUCTS THAT OFFER EASY APPLICATION COUPLED WITH RELIABLE, TRIED-AND-TESTED PERFORMANCE: RESISTANT TO WATER AND WEATHERING, FLEXIBLE AND ELASTIC EVEN AT LOW TEMPERATURES; CHARACTERISTICS THAT MAKE THEM IDEALLY SUITED FOR NON-PROFESSIONAL AND “DIY” USERS.

THE **CLASSIC** LINE INCLUDES:

- **ACRIFLEX MONO**
- **O.R.A. ECO ANTI-RAIN**

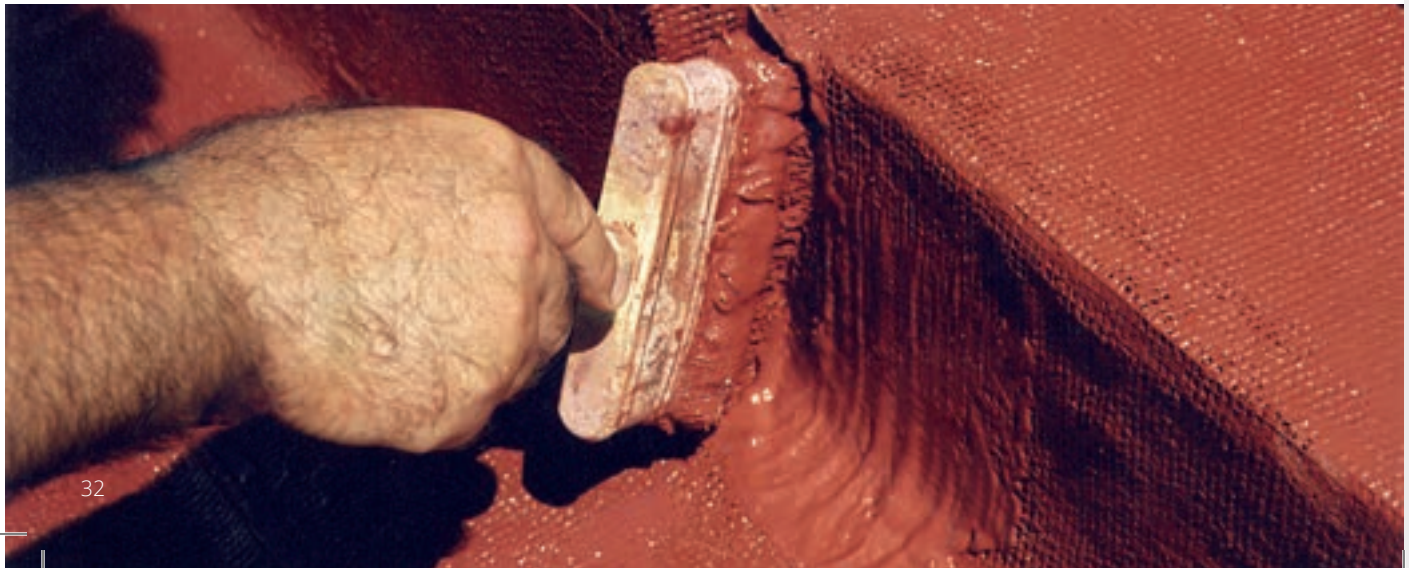


ACRIFLEX MONO

It is a one-component, water-based, coloured waterproofing product. Its main characteristic is its ability to satisfy multipurpose application requirements. Acriflex Mono is an elastic product with high flexibility which offers excellent performance in terms of resistance to UV rays and the elements.

In addition, the product allows waterproofing with low thicknesses and adapts to the geometry of the support to be waterproofed, creating a continuous, seamless membrane with a walkable surface that facilitates routine maintenance work.

The product has zero emission of volatile organic compounds.



FIELDS OF USE

- Roofs and terraces
- Eaves| cornices | chimneys
- Bathrooms | shower enclosures | kitchens | wet areas

TECHNICAL DATA

Colours:   

Coverage: 2 kg/m² with two coats

Application:



PERFORMANCE



**RESISTANT TO UV
RAYS AND THE
ELEMENTS**



**FLEXIBLE AND ELASTIC
EVEN
AT LOW
TEMPERATURES**



**WATER-
BASED**



**DRYING
TIME**

4 h 23 °C at 50% R.H.



**BREAK
ELONGATION**

170%

O.R.A. ECO ANTI-RAIN

It is a clear coating with quick and easy application which is suitable for waterproofing already-paved surfaces. Easy to apply and extremely versatile, it restores shine to floors, making the treated surface easy to clean.

The ease of application and resistance to the elements make the product the ideal choice for “DIY” projects and for those who wish to protect flooring and tile joints against water infiltration.



FIELDS OF USE

- Terraces and balconies
- Surfaces in stone or terracotta tiles
- Outdoor paved surfaces

TECHNICAL DATA

Colours: 

Coverage: 0.2 l/m²

Application:



PERFORMANCE



DRYING TIME

4 h 20 °C at 40% R.H.



ADHESION TO TILES

3.5 N/mm²



RESISTANCE TO ACCELERATED WEATHERING CYCLES

2000 HOURS (10 YEARS)

PRIMERS

The waterproofing process requires pre-treatment to optimise and prepare surfaces.

This preparation and preliminary treatment of surfaces with the most suitable primer **guarantees optimum performance in terms of adhesion of the waterproofing to the substrate, and extends the duration of the system.**



THE FOUNDING PRINCIPLE BEHIND DIASEN WATER-BASED PRIMERS IS THAT THERE IS NO SUCH THING AS A UNIVERSAL PRIMER, BUT DIFFERENT PRODUCTS THAT OFFER SPECIFIC SOLUTIONS FOR EVERY SUPPORT AND PERFORMANCE REQUIREMENT. ACCORDINGLY, THE DIASEN LINE OF PRIMERS GUARANTEES PERFECT ADHESION OF MATERIALS TO EVERY TYPE OF SUPPORT AND SURFACE, NEW OR EXISTING.

THE MAIN **PRIMERS** PRODUCED BY DIASEN ARE:

- **VAPOSTOP**
- **GRIP PRIMER**
- **SBS-BOND**
- **ACRIFLEX PRIMER**



VAPOSTOP

It is a one-component, water-based primer formulated with silylated polymers, specifically for cement supports. Suitable for damp or dusty surfaces, the product is a high-penetration material which increases the adhesion of waterproofing products and acrylic coatings.


Vapostop can also be applied in extreme climate conditions, is resistant to water and prevents carbonation, a chemical phenomenon which affects iron rebar in concrete, favouring rust. In addition, when applied to a damp cement support, Vapostop creates a barrier that prevents blistering and detachment on the subsequent coating.



■ FIELDS OF USE

- Damp concrete supports
- Concrete supports

■ TECHNICAL DATA

Colours: 

Coverage: 0.10 - 0.15 kg/m²

Application:



■ PERFORMANCE



**DRYING
TIME**

1 h 23 °C at 50% R.H.

GRIP PRIMER

It is a one-component, water-based primer, specifically formulated to guarantee excellent adhesion for all smooth or non-absorbent supports such as ceramics, metal and smooth concrete. Thanks to the adhesion properties ensured by Grip Primer, supports can be coated with waterproofing systems and liquid finishes.

Grip Primer can be used indoors and outdoors and offers easy application with brush or roller, guaranteeing rapid drying along with outstanding versatility for different types of application.



■ FIELDS OF USE

- Concrete supports
- Tiles
- Metal
- Wood
- Smooth supports

■ TECHNICAL DATA

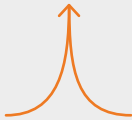
Colours: ●

Coverage: 0.15 - 0.2 kg/m²

Application:



■ PERFORMANCE



ADHESION TO TILES

4.17 N/mm²



**ADHESION TO
CONCRETE**

1.66 N/mm²



ADHESION TO METAL

1.50 N/mm²

SBS-BOND

It is a water-based primer which ensures excellent adhesion on smooth or slated bituminous membranes, both old and worn. SBS-Bond is a rapid-drying product which guarantees speed and ease of application.

The product is ready to use, characterised by a short drying time and thanks to its formulation it is neither toxic nor inflammable. It can be applied outdoors on different types of surfaces, including horizontal, vertical and sloping supports.



■ FIELDS OF USE

- Smooth bituminous membrane
- Slated bituminous membrane

■ TECHNICAL DATA

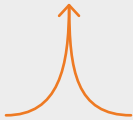
Colours: ●

Coverage: 0.10 - 0.15 kg/m²

Application:



■ PERFORMANCE



**ADHESION TO
MEMBRANE**

0.53 N/mm²

ACRIFLEX PRIMER

It is a water-based impregnating primer for asbestos supports. Its formulation allows it to act by fixing the asbestos fibres. This prevents their dispersion, enabling safe removal or subsequent coating.

Acriflex Primer is a one-coat product which gives excellent adhesion on asbestos cement supports. It offers quick and easy application and is characterised by excellent impregnation coupled with short drying times.



■ FIELDS OF USE

- Asbestos encapsulation

■ TECHNICAL DATA

Colours: ●

Coverage: 0.1 l/m²

Application:



■ PERFORMANCE



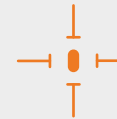
ENCAPSULATION
TYPE A
VISIBLE OUTDOORS

Acriflex Primer +
Acriflex Pro or
Acriflex Rapido



ENCAPSULATION
TYPE B
VISIBLE INDOORS

Acriflex Primer +
Acriflex Pro or
Acriflex Rapido
waterproofing



ENCAPSULATION
TYPE C
NOT VISIBLE

Acriflex Primer +
Acriflex Pro or
Acriflex Rapido
waterproofing



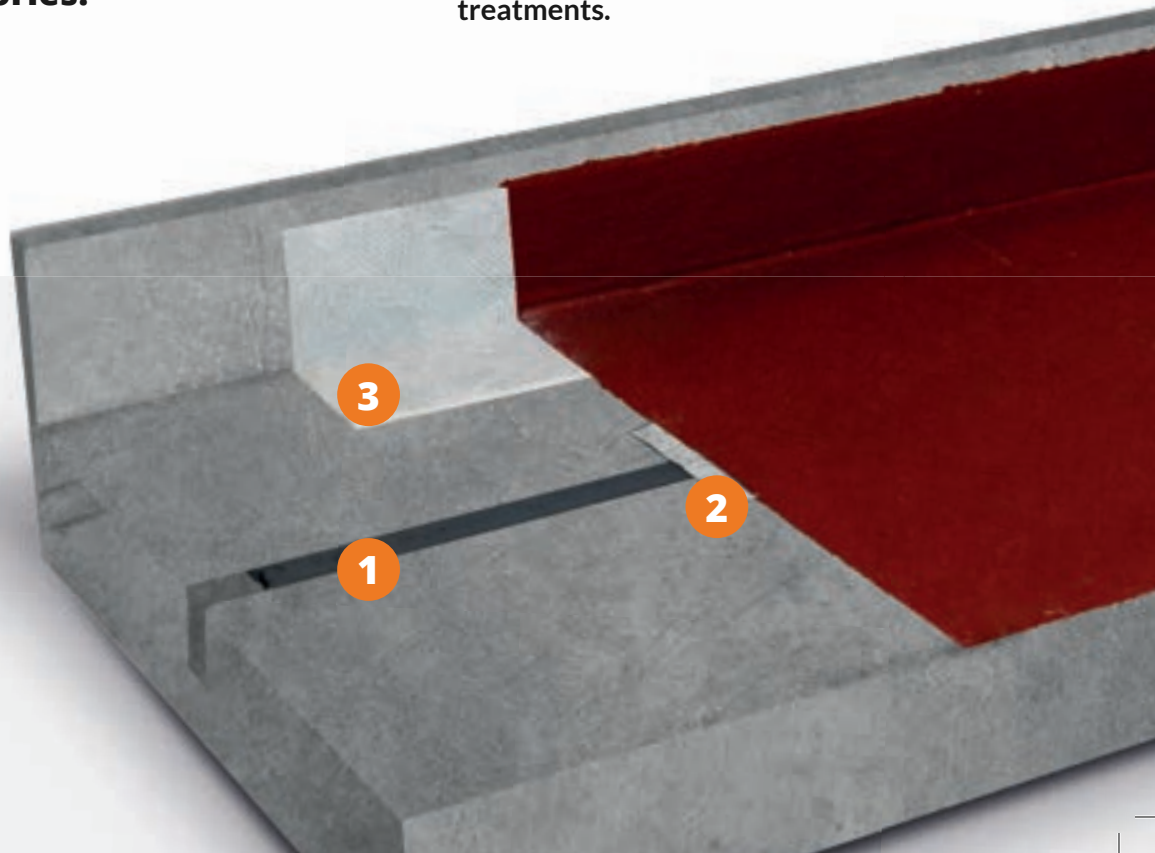
ENCAPSULATION
TYPE D
AUXILIARY

Acriflex Primer

SYSTEM ACCESSORIES

Efficient application of a waterproofing system also avails of so-called system accessories.

System accessories are materials and products which **enable complementary functions apart from primer-waterproofing treatments.**



THE MAIN **SYSTEM**
ACCESSORIES ARE:

- **SEALANTS WITH EXCELLENT FILLING CAPACITY**
- **NON-WOVEN FABRIC WHICH INCREASES RESISTANCE**
- **ELASTIC TAPE**
- **ELASTIC SEALANT TAPE**



4

1. Diaseal Strong
2. Safety Joint Roll
3. Safety Joint Roll
4. Diasen waterproofing product

DEASEAL STRONG

It is a one-component polyurethane product which polymerises in contact with humidity, forming a sealant for joints that adapts to any movement of the support. It offers excellent adhesion to the majority of building materials used.

Extremely easy to use, the product is characterised by excellent thixotropy and high resistance to micro-organisms and fungi. In addition, it is suitable for contact with potable water and it retains its elasticity to extremely low temperatures.



FIELDS OF USE

- Sealing of joints
- Waterproofing and sealing of expansion joints
- Waterproofing of penetrants
- Waterproofing of joints between prefabricated panels

TECHNICAL DATA

Colours: ●

Coverage: dependent on use

PERFORMANCE



COLD FLEXIBILITY

-25 °C



BREAK ELONGATION

>900%



CONCRETE ADHESION

<2 N/mm²



RESISTANCE TO ACCELERATED WEATHERING CYCLES

2000 HOURS

POLITES TNT

It is a non-woven (TNT) fabric sheet for reinforcement in liquid waterproofing. Made of polypropylene fibres, it acts to increase the tensile and puncture strength of liquid waterproofing systems.

Polites TNT offers easy application and characteristics that endure over time. It has high dimensional stability, is non-toxic and is compatible with many different products and with Diasen waterproofing systems.



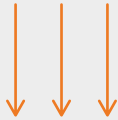
■ **FIELDS OF USE**

- Reinforcement of waterproofing products

■ **TECHNICAL DATA**

Coverage: 1 m²/m²

■ **PERFORMANCE**



**STATIC PUNCTURE
STRENGTH**

750 N



**DYNAMIC PUNCTURE
STRENGTH**

43.00 mm



**BREAK
ELONGATION**

50% ± 15%

SAFETY JOINT ROLL

It is an elastic tape in non-woven fabric which can be used for the waterproofing treatment of critical spots and connection points between horizontal and vertical surfaces. It is used in conjunction with both one-component and two-component water-based liquid waterproofing products to reinforce their mechanical strength.

Safety Joint Roll is characterised by high elasticity and full compatibility with the waterproofing processes, guaranteeing their durability with quick application times.



■ FIELDS OF USE

- Connection points between horizontal and vertical surfaces.
- Joints

■ TECHNICAL DATA

Coverage: 1 m/m

■ PERFORMANCE



ELONGATION
(% ON BREAKING
STRENGTH OF 2 N/cm)

45 - 85 %



**LOAD
RESISTANCE**

> 20.0 N/cm

SAFETY JOINT TOP



It is an adhesive sealant which is used on connection points where effective adhesion to concrete and rough, absorbent surfaces are required, combining workability, plasticity and deformability.

Safety Joint Top, comprised of butyl rubber and hydrophilic polypropylene, is characterised by excellent heat stability, quick application times and total adhesion to concrete supports. The product has an easy-peel format for quick removal of the film.

■ FIELDS OF USE

- Connection points between horizontal and vertical surfaces. In combination with the ULTRABIT product

■ TECHNICAL DATA

Coverage: 1 m/m

■ PERFORMANCE



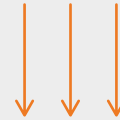
BREAK ELONGATION

>70%



CONCRETE ADHESION

0.9 N/m²



PUNCTURE STRENGTH

>80 N



TEAR RESISTANCE

>80 N



INTERVENTIONS AND SOLUTIONS

WATERPROOFING IS A CRUCIAL ELEMENT FOR **ENSURING THE LIVEABILITY** **AND ENDURANCE OF** **BUILDINGS.**

TO ACHIEVE MAXIMUM
EFFICIENCY IN THIS PROCESS,
IT IS VITALLY IMPORTANT
TO **ESTABLISH THE BEST**
APPLICATION CYCLE FOR
EACH TYPE OF SURFACE
AND SUPPORT.

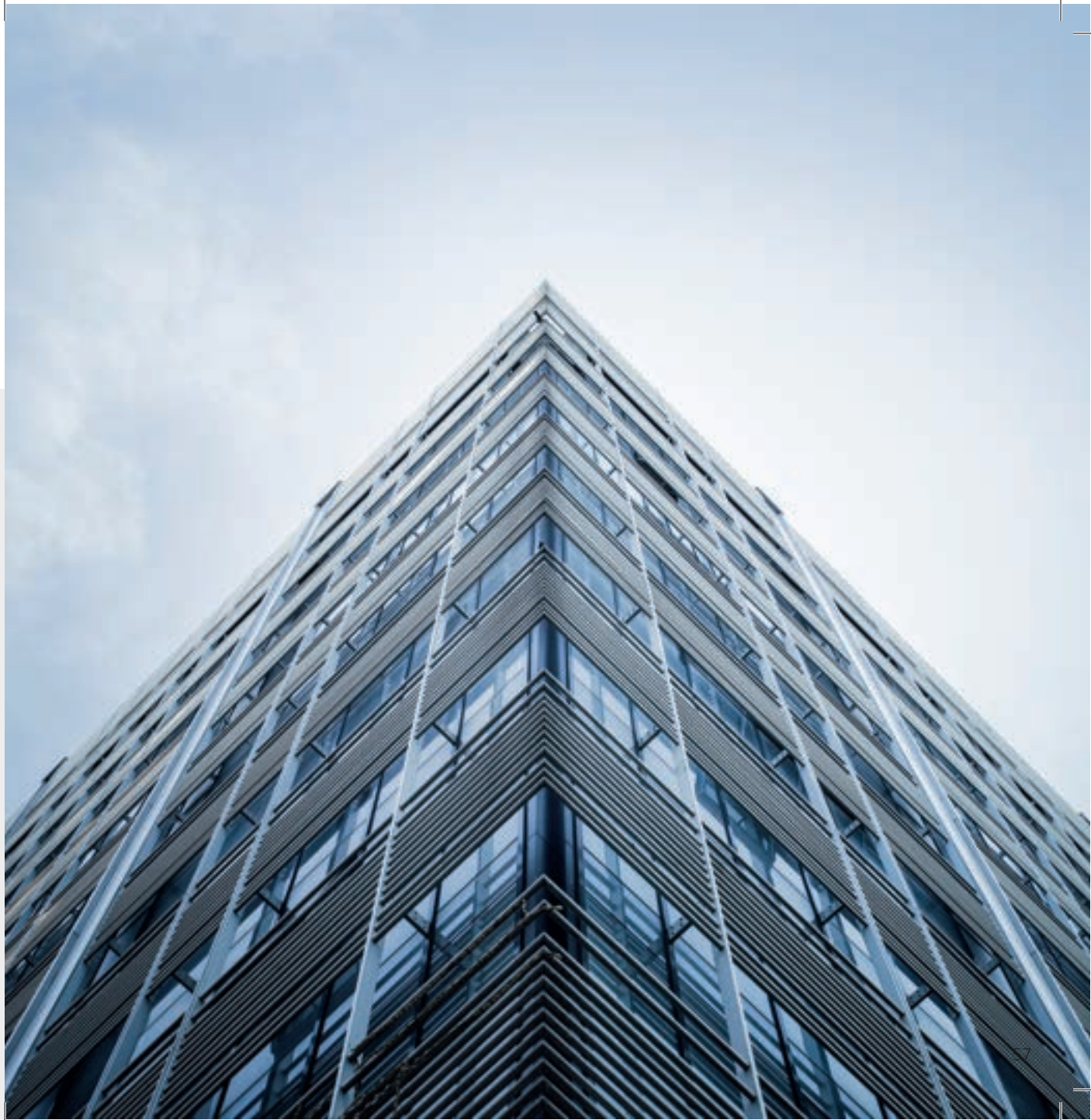
In this regard, Diasen product lines cover a vast range of market requirements linked to every aspect of the waterproofing of buildings.

WORK **ON BUILDINGS:**

- Roof
- Roofs in asbestos, asbestos cement
- Terraces and balconies
- Retaining walls, basements, lift shafts, damp walls
- Garages, industrial flooring
- Foundations
- Showers, bathrooms, indoor areas of the home

WORK **OUTSIDE OF BUILDINGS:**

- Swimming pools
- Tanks, containment tanks, manholes



WORK ON BUILDINGS

ROOF

On any building, the roof is the area most exposed to the stresses of the elements: UV rays, rain, seasonal and night-time temperature excursions, sudden changes in temperature.

All these stress factors combined affect the entire structure of the building, but the roof is the most critical area of all. Dienen waterproofing systems can be applied to both **flat roofs** and **pitched roofs**.

| PITCHED ROOF (usually tiled) | | |
|--|------------------------|------------------------------------|
| PRIMER | WATERPROOFING | TECHNOLOGY AREA |
| Grip Primer Vapostop SBS-Bond | | |
| | Acriflex Rapido | Smart Drying Technology |
| | Ultragum | Smart Drying Technology |
| | Acriflex X-Pro | High Performance |
| | Acriflex Fybro | Technical Waterproofing |

FLAT ROOF

Cement Support

| PRIMER | WATERPROOFING | TECHNOLOGY AREA |
|------------------------------|------------------------|--------------------------------|
| Grip Primer/ Vapostop | | |
| | Acriflex Rapido | Smart Drying Technology |
| | Ultragum | Smart Drying Technology |
| | Acriflex X-Pro | High Performance |
| | Acriflex Pro | High Performance |
| | Oriplast Reflex | High Performance |
| | Acriflex Fybro | Technical Waterproofing |

Bituminous or Slated Support

| PRIMER | WATERPROOFING | TECHNOLOGY AREA |
|-----------------|------------------------|--------------------------------|
| SBS-Bond | | |
| | Acriflex Rapido | Smart Drying Technology |
| | Ultragum | Smart Drying Technology |
| | Acriflex Pro | High Performance |
| | Acriflex X-Pro | High Performance |
| | Oriplast Reflex | High Performance |

WORK ON BUILDINGS

ROOFS IN ASBESTOS AND ASBESTOS CEMENT

Asbestos and asbestos cement roofs are a relic from an era in construction when the extremely harmful effects of these materials on human health were not yet fully understood.

Asbestos poses a danger when its fibres become airborne, but asbestos removal is an extremely complex and costly process.

Diasen waterproofing products can be used, instead, to **encapsulate the fibres**, so **they are no longer dangerous**.

ROOFS IN ASBESTOS AND ASBESTOS CEMENT

| PRIMER | WATERPROOFING | TECHNOLOGY AREA |
|------------------------|------------------------|--------------------------------|
| Acriflex Primer | | |
| | Acriflex Rapido | Smart Drying Technology |
| | Acriflex Pro | High Performance |

TERRACES AND BALCONIES

Terraces and balconies are often affected by problems of water infiltration and penetration of precipitation. Over time, if not tackled and resolved, these problems can lead to all kinds of trouble and the need for complex and costly maintenance and refurbishment. Good waterproofing, therefore, represents a wise and sustainable way of protecting the structural and aesthetic integrity of a building.

Diasen waterproofing systems can be applied to terraces and balconies before tiling or on top of existing tiles, so without the need to remove already installed flooring materials.

| TERRACES AND BALCONIES | | |
|------------------------|-----------------|-------------------------|
| Before tiling | | |
| PRIMER | WATERPROOFING | TECHNOLOGY AREA |
| Grip Primer Vapostop | | |
| | Ultragum | Smart Drying Technology |
| | Ultrabit | Smart Drying Technology |
| | Acriflex Fybro | Technical Waterproofing |
| | Acriflex Rapido | Smart Drying Technology |
| | Acriflex Pro | High Performance |
| Over existing tiles | | |
| PRIMER | WATERPROOFING | TECHNOLOGY AREA |
| Grip Primer | | |
| | Ultrabit | Smart Drying Technology |
| | Acriflex X-Pro | High Performance |
| | O.R.A Anti-rain | Classic Line |

WORK ON BUILDINGS

RETAINING WALLS, BASEMENTS, LIFT SHAFTS, DAMP WALLS, INDUSTRIAL FLOORING AND GARAGES

These environments share a common problem, namely a high level of humidity which calls for **effective waterproofing in order to create a vapour barrier** before installation of coatings or flooring, **to encapsulate horizontal and vertical damp, and to create a barrier against negative water**

RETAINING WALLS, BASEMENTS, LIFT SHAFTS, DAMP WALLS INDUSTRIAL FLOORING AND GARAGES

| PRIMER | WATERPROOFING | TECHNOLOGY AREA |
|--------|---------------|-------------------------|
| | WATstop | Technical Waterproofing |

infiltration in underground environments.

In the case of industrial flooring and garages, it is usually necessary to **apply waterproofing and vapour barrier systems before installation of coatings or coverings.**

FOUNDATIONS

Good waterproofing of a building's foundations is essential in order to maintain the durability of structures and their functionality.

The climate of the building location, in-situ soil characteristics and the humidity content of the latter, rainwater and groundwater infiltrations all represent critical factors and potential risks which can be tackled and controlled through appropriate and effective waterproofing systems.

ROOFS IN ASBESTOS AND ASBESTOS CEMENT

| PRIMER | WATERPROOFING | TECHNOLOGY AREA |
|----------------------------|-----------------------|--------------------------------|
| Vapostop (optional) | | |
| | Ultrabit | Smart Drying Technology |
| | Ultragum | Smart Drying Technology |
| | Acriflex Fybro | Technical Waterproofing |

WORK OUTSIDE OF BUILDINGS

SHOWERS, BATHROOMS, INDOOR AREAS OF THE HOME

Showers, bathrooms and other indoor areas of the home, such as the kitchen, are environments with high levels of water vapour formation and an associated high risk of infiltration, with the possibility of progressive deterioration of substrate materials, detachment or cracking of tiles.

For this reason, **the waterproofing of these areas plays a crucial role in ensuring a healthy environment and optimal conditions in all household areas.**

| SHOWERS, BATHROOMS, INDOOR AREAS OF THE HOME | | |
|--|---------------|------------------|
| PRIMER | WATERPROOFING | TECHNOLOGY AREA |
| Vapostop Grip Primer | | |
| | Acriflex Mono | Classic Line |
| | Acriflex Pro | High Performance |



WORK OUTSIDE OF BUILDINGS

SWIMMING POOLS

Swimming pools are no longer just a symbol of social status, as they were in the past, but an increasingly popular, albeit still expensive, ingredient of living comfort.

These **spaces are subject to major stress factors**, making it vital to protect structural elements from the prolonged action of water and the impact of the corrosive and erosive elements present in the chlorine-based substances used to disinfect pool water.

| SWIMMING POOLS | | |
|--|----------------|-------------------------|
| Subsequently covered with resin-based coating | | |
| PRIMER | WATERPROOFING | TECHNOLOGY AREA |
| | WATstop | Technical Waterproofing |
| Subsequently covered with mosaic tiling | | |
| PRIMER | WATERPROOFING | TECHNOLOGY AREA |
| | WATstop | Technical Waterproofing |
| | Acriflex Fybro | Technical Waterproofing |

TANKS, CONTAINMENT TANKS, MANHOLES

These are spaces and elements which are characterised by systematic, constant contact with liquid products, prolonged exposure to which constitutes a stress on structures and a source of wear and tear on construction materials.

Liquids in contact with tanks, containment tanks and manholes – generally – **can have significantly different pH levels which call for waterproofing products that deliver excellent performance in both highly acidic and highly basic environments.**

| TANKS, CONTAINMENT TANKS, MANHOLES | | |
|------------------------------------|---------------------|------------------------------------|
| PRIMER | WATERPROOFING | TECHNOLOGY AREA |
| WATstop Vapostop | | |
| | Acriflex pH4 | Technical Waterproofing |

WATERPROOFING SYSTEMS®

ADVANCED
TECHNOLOGY SOLUTIONS
FOR TOTAL PROTECTION
AGAINST WATER



EUROCLASE A1







DIASEN

Sassoferrato, Italy
diasen@diasen.com

DIASEN FRANCE

Sablet, France
france@diasen.com

DIASEN IBÉRICA

7005 -177 Évora, Portugal
iberica@diasen.com

DIASEN SERBIA

Belgrade, Serbia
easterneurope@diasen.com

DIASEN USA

Newnan, GA, 30263
usa@diasen.com

DIASEN ASIA

Singapore
singapore@diasen.com

DIASEN MIDDLE EAST

Sharjah, F.Z.E. - U.A.E.
me@diasen.com



www.diasen.com